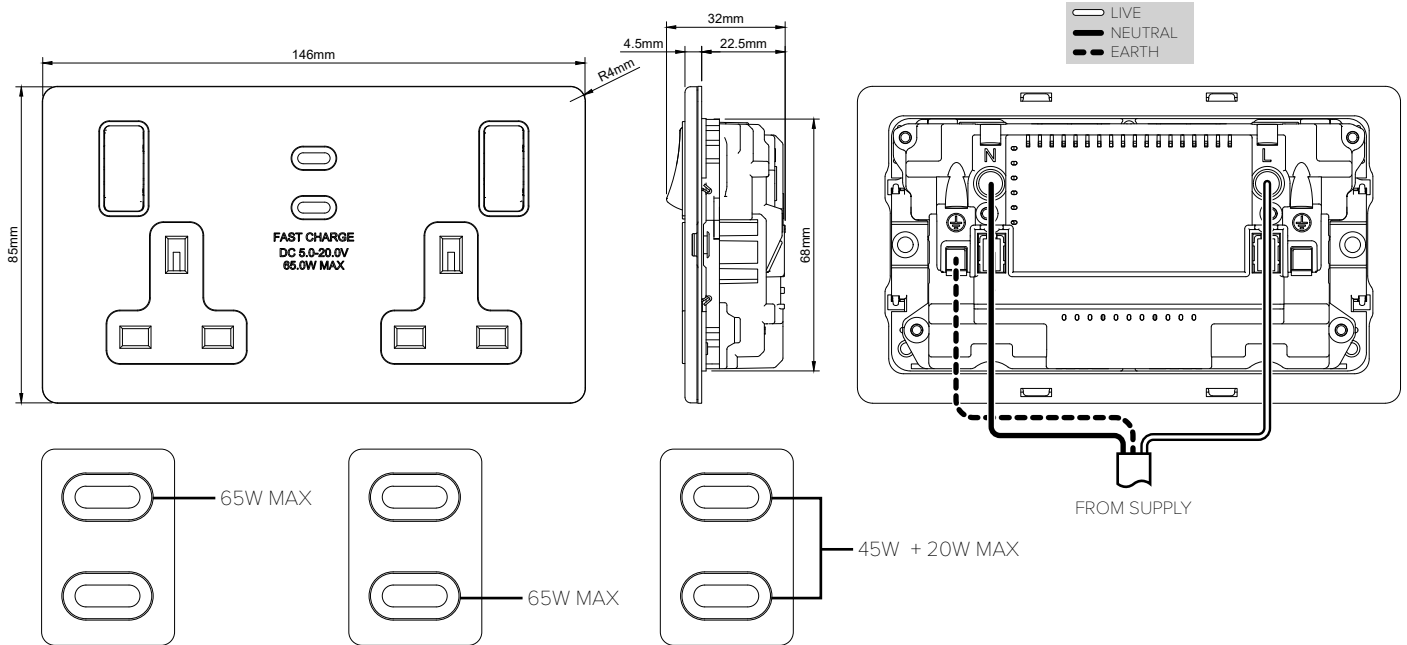


2 Gang 13A Switched Socket + 65W Max PD Type C+C USB Charger - Traditional Plate



TECHNICAL SPECIFICATION

Standard(s)	BS 1363, BS EN 62368
Voltage Rating	13 Amp, 250V~
USB Specification	USB PD (TYPE C ONLY), QC2.0, QC3.0, PE, SCP, FCP, AFC
USB Voltage	DC = 5-20V
USB Output	65W Max Shared
Mounting Box Depth (Min)	35mm
Terminal Capacity	3 x 2.5mm ² , 2 x 4.0mm ² , 1 x 6.0mm ²
Earth Terminal Capacity	3 x 2.5mm ² , 2 x 4.0mm ² , 1 x 6.0mm ²
Outlet Protection Shutter	Yes
Fixing Centres	120.6mm
Size	86mm x 146mm x 4.5mm (Plate thickness)
Product Class 1	Product must be earthed
Ambient Operating Temperature	-5° to +40°C
Recommended Location	Internal Use Only
Maximum Installation Altitude	2000m
IP Rating	IP2XD
Switched Poles	Single Pole
Mains Frequency	50hz - 60hz
Trademarks	The Soho Lighting Company is a registered trade mark number: UK00003313349, EU017906396, Date: 25 May 2018